

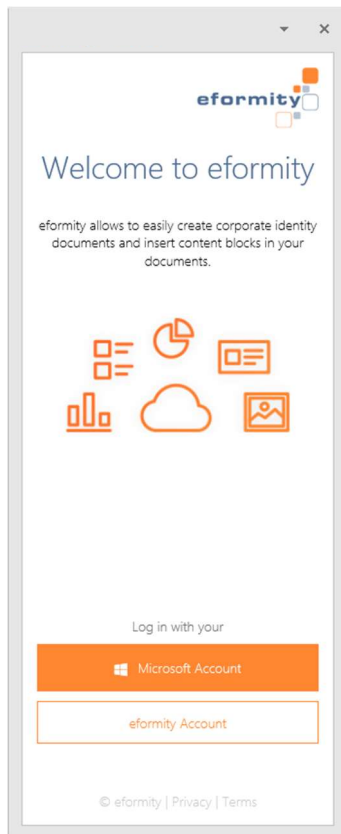
eformity Signature Manager for Outlook

Instructions

1 Getting started

Welcome to the eformity Signature Manager for Microsoft Outlook. This document explains the basic app functionalities that are used to seamlessly integrate your existing or new eformity subscription in Microsoft Outlook.

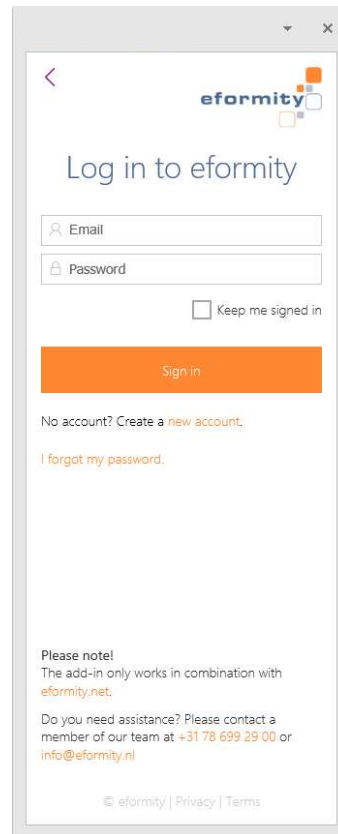
Let's get started:



Select your account type.

If you have an eformity subscription, select eformity Account.

Use your Microsoft Account if you do not yet have an eformity subscription – a temporary subscription will be created for you.

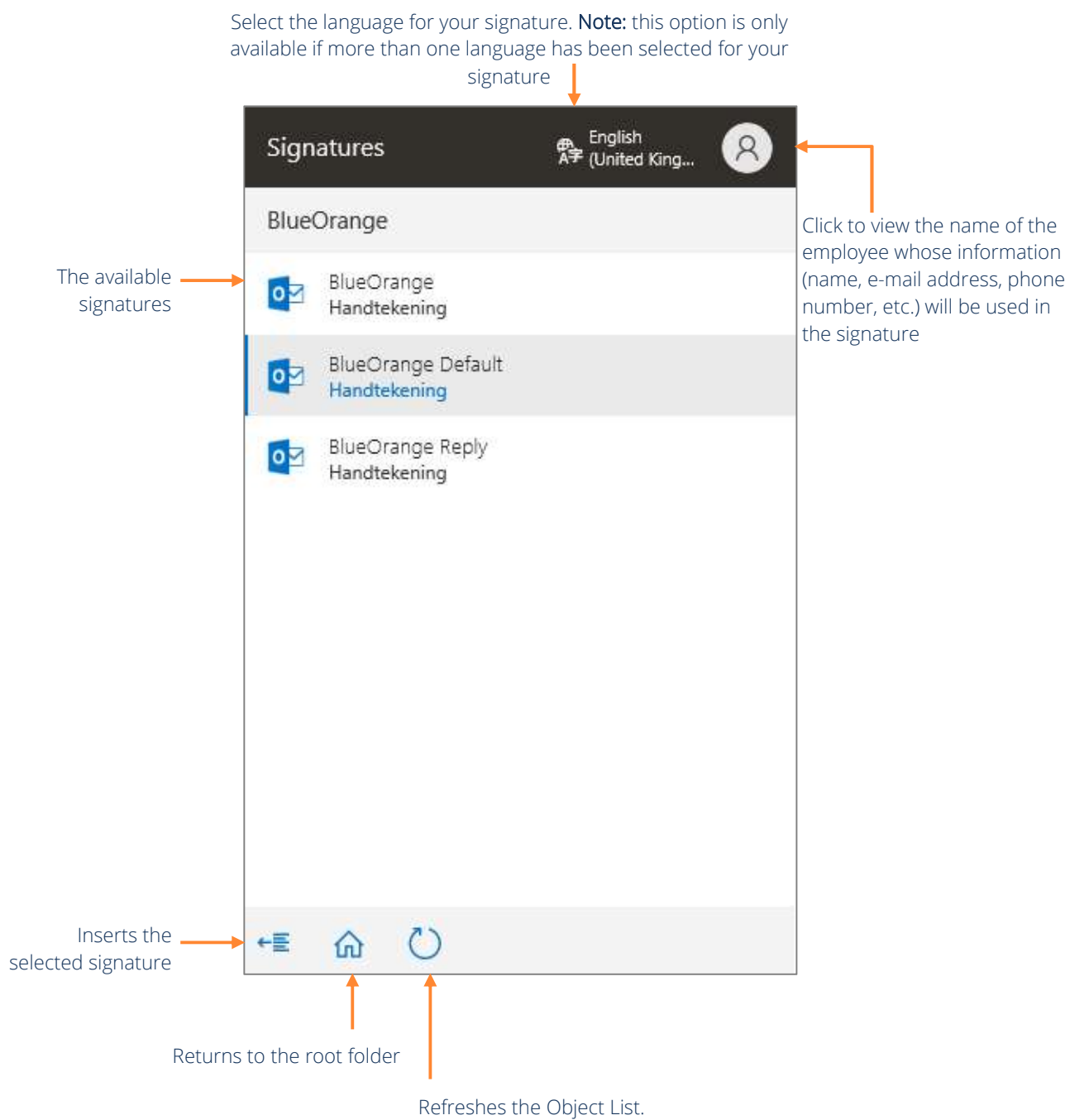


After choosing eformity Account, the above log-in screen appears.

If you chose Microsoft Account, you will automatically be logged on.

1.1 Overview of Signature Manager side panel

The side panel in Outlook contains the signatures that are available to you.



The Settings menu contains the following items:

